



Solderless Connectors & Collars



TYPE: C/CS/SE

CMC[®] Copper collars are manufactured from high strength pure electrolytic copper to insure both maximum strength and conductivity. Easy to install with screwdriver, wrench or pliers and reusable. Plain copper finish.



Catalog Number	Fig. No.	Cond. Range AWG	Mtg Hole	Dimensions, Inches		
				H	W	L
C-54-S	3	6 - 14	0.22	0.47	0.34	0.38
C-58-S	3	4 - 14	0.25	0.52	0.45	0.47
C-68-S	3	1/0 - 14	0.25	0.61	0.53	0.63
CS-105	4	1/0 - 14		0.88	0.55	0.63
CS-175	4	4/0 - 2		1.09	0.75	0.88
CS-200	4	250 - 6		0.88	0.81	1
SE-12	5	12 - 12		0.36	0.25	0.28
SE-10-8	5	8 - 10		0.48	0.25	0.31
SE-6	5	6 - 6		0.69	0.34	0.44
SE-4	5	4 - 4		0.78	0.44	0.5
SE-2	5	2 - 2		0.94	0.47	0.75

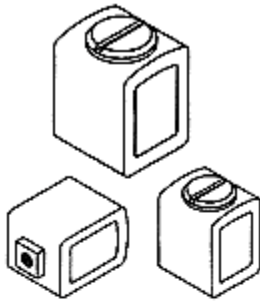


Fig. 3

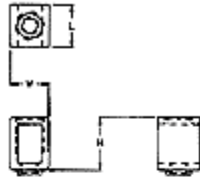


Fig. 4

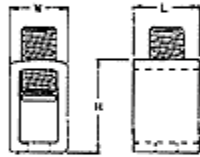
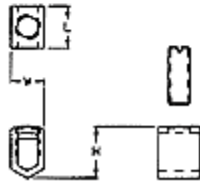


Fig. 5





4300 E. Miraloma Ave. • Anaheim, CA 92807 • Tel. 714.854.1715 Fax 714.854.1716
www.cf1.com

