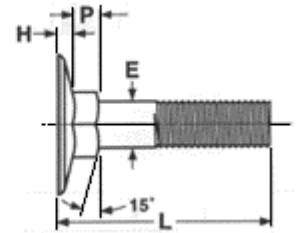
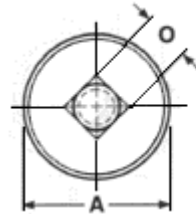




Elevator Bolts



Nominal Size or Basic Bolt Diameter		E Body Diameter		A Head Diameter			H Head Height		O Square Width		P Square Depth	
				Max. Edge Sharp	Min. Edge Sharp	Min. Edge Flat						
		Max.	Min.	Max.	Min.	Max.	Min.					
		1/4	0.2500	0.260	0.237	1.008	0.969	0.938	0.098	0.087	0.280	0.245
5/16	0.3125	0.324	0.298	1.227	1.188	1.157	0.114	0.094	0.342	0.307	0.250	0.219
3/8	0.3750	0.388	0.360	1.352	1.312	1.272	0.145	0.125	0.405	0.368	0.250	0.219