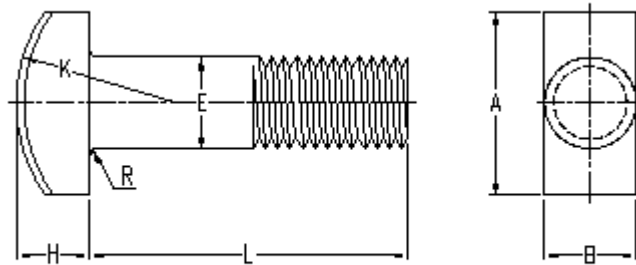


T-Head Bolt



T-Head Bolt

UNIT: INCH

Nominal Size	E		A		B		H		K	R
	Body Diameter		Head Length		Head Width		Head Height		Head Radius	Fillet Radius
	Max	Min	Max	Min	Max	Min	Max	Min	Max	Max
1/4 .2500	.260	.237	.500	.488	.280	.245	.204	.172	.438	.031
5/16 .3125	.324	.298	.625	.609	.342	.307	.267	.233	.500	.031
3/8 .3750	.388	.360	.750	.731	.405	.368	.331	.295	.625	.031
7/16 .4375	.452	.421	.875	.853	.468	.431	.394	.356	.875	.031
1/2 .5000	.515	.483	1.000	.975	.530	.492	.458	.418	.875	.031
5/8 .6250	.642	0.605	1.250	1.218	.675	.616	.585	.541	1.062	.062
3/4 .7500	.768	0.729	1.500	1.462	.800	.741	.649	.601	1.250	.062
7/8 .8750	.895	0.852	1.750	1.706	.938	.865	.776	.724	1.375	.062
1 1.0000	1.022	0.976	2.000	1.950	1.063	.990	.903	.847	1.500	.062

A low or medium carbon steel, externally threaded Mechanical device 1/4" diameter or larger, with a rectangular head with rounded top surface and a flat bearing surface. Used in Machine tool and water works industries.