



Two Conductor Solderless Lugs

TYPE: 2AB/2AB2



'PosiGrip'

90°C RATING (486B LISTED)
Patented

- The unique ridges formed on the bottom of the contact surface are designed to provide contact points for an electrically secure joint of the lowest resistance for current flow.
- The screws used to clamp the conductors are designed to extend beyond the barrel sides of the conductor to allow a better, more secure compression of the conductor. This design spreads the conductor strands to help dissipate heat, and improve its pull-out safety features and capabilities.
- The design of the wire way provides optimum transfer of current, creating a straight line flow through the connector for the least possible path of electrical resistance. A positive wire stop is also provided.



Catalog Number	Fig. No.	Screw Type	Cond. Range AWG	Dimensions, Inches					
				H	W	L	G	D*	T
2AB-112	1	Slot/Hex	1/0 - 14	0.78	1.12	1.31	0.44	0.27	0.16
2AB-125	1	Slot/Hex	2/0 - 14	0.78	1.25	1.47	0.43	0.27	0.19
2AB-250	2	.31H	250 - 6	1.09	1.62	2.56	0.53	0.44	0.22
2AB-350	2	.31H	350 - 6	1.18	1.92	2.87	0.63	0.41	0.25
2AB-500	2	.38H	500 - 4	1.44	2.4	2.62	0.63	0.56	0.31
2AB-600	2	.38H	600 - 2	1.56	2.4	3.18	0.63	0.56	0.38
2AB-750	2	.38H	750 - 1/0	1.81	3.5	3.25	0.88	0.56	0.44
2AB-1000	2	.50H	1000 - 500	1.94	3.5	3.5	0.88	0.56	0.44
2AB2-350	3	.31H	350 - 6	1.18	1.92	4.25	0.63	0.56	0.25
2AB2-500	3	.38H	500 - 4	1.56	2.4	4.59	0.63	0.56	0.38
2AB2-600	3	.38H	600 - 2	1.56	2.4	4.59	0.63	0.56	0.38
2AB2-750	3	.38H	750 - 1/0	1.81	3.5	4.84	0.63	0.66	0.44
2AB2-1000	3	.50H	1000 - 500	1.94	3.5	4.94	0.63	0.66	0.44

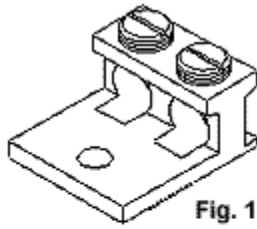


Fig. 1

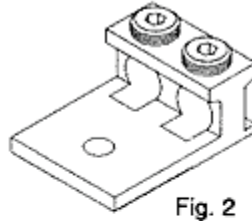


Fig. 2

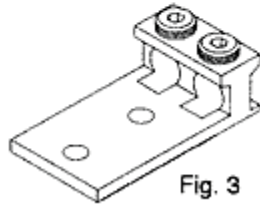
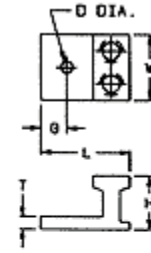
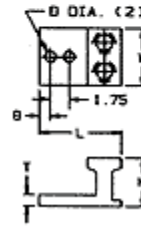


Fig. 3





4300 E. Miraloma Ave. • Anaheim, CA 92807 • 714.854.1715 Fax 714.854.1716
www.cfi1.com

