



714-854-1715 (www.cfi1.com)

Single Hole Solderless Lugs



'PosiGrip'

90°C RATING (486B LISTED)

Patented

TYPE: AB / A1B2

- The unique ridges formed on the bottom of the contact surface are designed to provide contact points for an electrically secure joint of the lowest resistance for current flow.
- The screws used to clamp the conductors are designed to extend beyond the barrel sides of the conductor to allow a better, more secure compression of the conductor. This design spreads the conductor strands to help dissipate heat, and improve its pull-out safety features and capabilities.
- The design of the wire way provides optimum transfer of current, creating a straight line flow through the connector for the least possible path of electrical resistance. A positive wire stop is also provided.



Catalog Number	Fig. No.	Screw Type	Cond. Range AWG	Dimensions, Inches					
				H	W	L	G	D*	T
AB-50-S	1	Slot	6 - 14	0.49	0.5	1.06	0.31	0.27	0.09
AB-70-S	1	Slot	2 - 14	0.55	0.5	1.16	0.31	0.27	0.1
AB-112S	1	Slot/Hex	1/0 - 14	0.78	0.63	1.31	0.31	0.27	0.16
AB-125S	1	Slot/Hex	2/0 - 14	0.78	363	1.47	0.38	0.27	0.19
AB-250S	2	.31H	250 - 6	1.09	0.88	2	0.44	0.33	0.22
AB-300S	2	.31H	300 - 6	1.12	1	2	0.5	0.41	0.25
AB-350S	2	.31H	350 - 6	1.18	1	2.25	0.56	0.33	0.25
AB-500S	2	.38H	500 - 4	1.44	1.25	2.62	0.63	0.41	0.31
AB-600S	2	.38H	600 - 2	1.56	1.43	3.18	0.88	0.41	0.38
AB-750S	2	.38H	750 - 1/0	1.8	1.44	3.25	0.88	0.66	0.44
AB-1000S	2	.50H	1000 - 500	1.94	1.62	3.5	0.88	0.56	0.44
A1B2-350	3	.31H	350 - 6	1.18	1	4.25	0.63	0.56	0.25
A1B2-500	3	.38H	500 - 4	1.43	1.25	4.37	0.63	0.56	0.31
A1B2-600	3	.38H	600 - 2	1.56	1.25	4.59	0.63	0.56	0.38
A1B2-750	3	.38H	750 - 1/0	1.81	1.43	4.84	0.63	0.56	0.44
A1B2-1000	3	.50H	1000 - 500	1.94	1.62	4.94	0.63	0.56	0.44



714-854-1715 (www.cfi1.com)

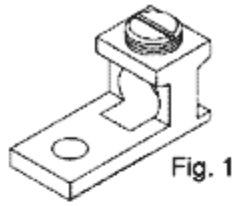


Fig. 1

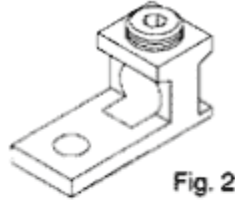


Fig. 2

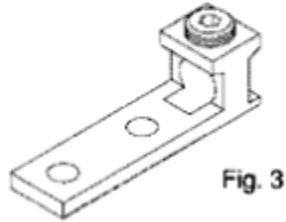
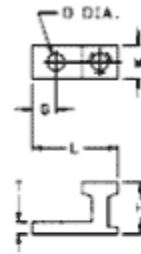


Fig. 3

